

Lessons from the Gulf

The Honorable Jane Lubchenco, Ph.D.

Under Secretary of Commerce for Oceans and Atmosphere &
NOAA Administrator

National Oceanic and Atmospheric Administration | NOAA



Society of Environmental Journalists

October 15, 2010



March 24, 1989

Exxon Valdez



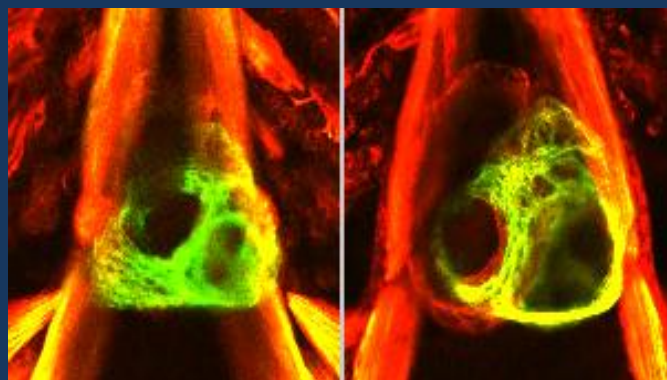
*Exxon
Valdez*



**BP/Deepwater
Horizon**



TANKER SPILL



LONG-TERM
BIOLOGICAL EFFECTS:
FISH CARDIAC
DEVELOPMENT



STEAM WASHING
THE SHORE

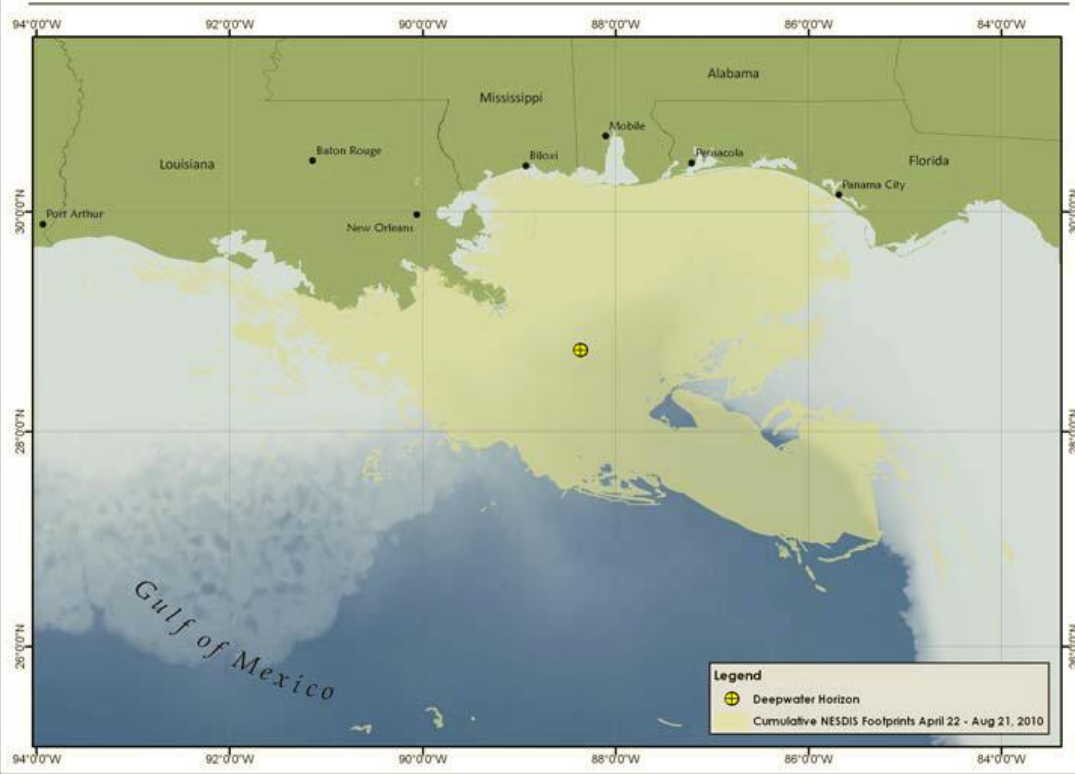
CAGE
THR: 0

Maxx 3

30 45 60

Cumulative Observations of Surface Oil (April 22-August 21, 2010)

Deepwater Horizon Response, Gulf of Mexico



OCEANEERING



5

Conduct & share **science**

Keep **seafood** safe

Protect **wildlife & habitats**

Assess **damage**

Restore the natural
resources that were injured

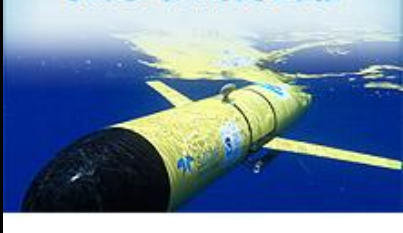
Aircraft & Unidentified-Platform Data



Ship Data



Glider & Float Data



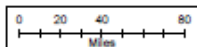
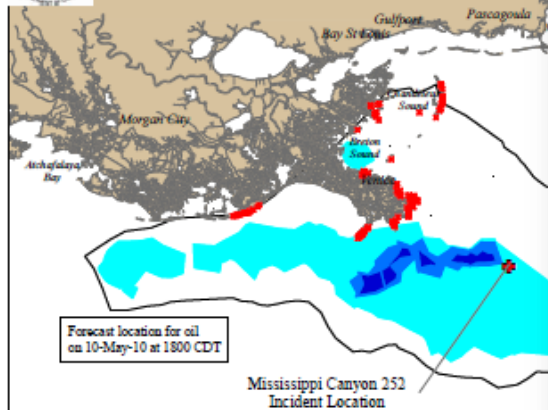
Trajectory Forecast Mississippi Canyon 252

NOAA/NOS/OR&R

Estimate for: 1800 CDT, Monday, 5/10/10

Date Prepared: 2100 CDT, Saturday, 5/08/10

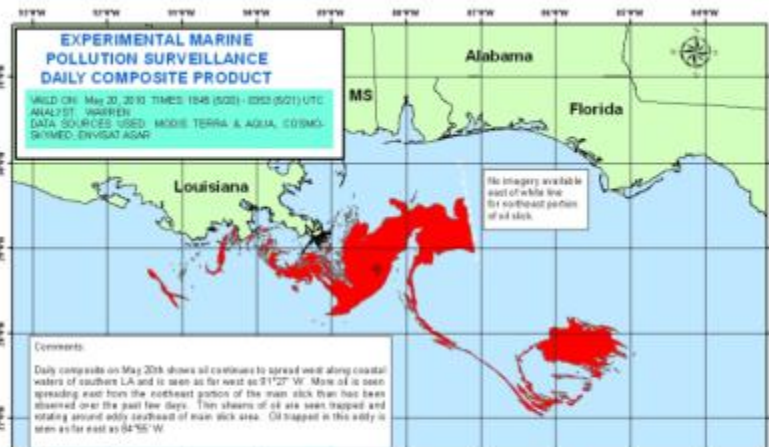
This forecast is based on the NWS spot forecast from Saturday, May 8th PM. Currents were obtained from the NOAA Gulf of Mexico, West Florida Shelf/USF, Texas A&M/TGLO, and NAVO/NRL models and HFR measurements. The model was initialized from satellite imagery, analysis provided by NOAA/NESDIS obtained Saturday morning, and Friday/Saturday overflight observations. The leading edge may contain turballs that are not readily observable from the imagery (hence not included in the model initialization). Oil near bay inlets could be brought into that bay by local tidal currents.



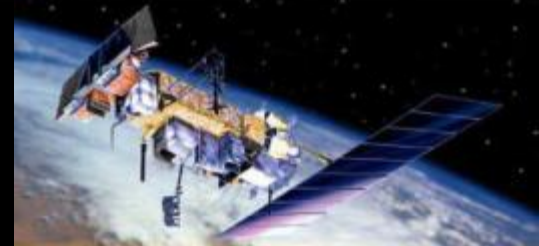
Significant winds from the N tonight, changing to NE on Sunday and then E on Sunday night might move the main plume and other surface oil downwind. The Mississippi Delta, Breton Sound, the Chandeleur Islands and areas directly north have a potential for shoreline contacts throughout the forecast period. West of the Mississippi Delta, the shoreline between Timbalier Bay and Barataria Bay is threatened on Monday. With continued winds from the E, potential oil contacts could reach as far west as Pt. Au Fer Island by Wednesday.



this scale bar shows the meaning of the distribution terms at the current time



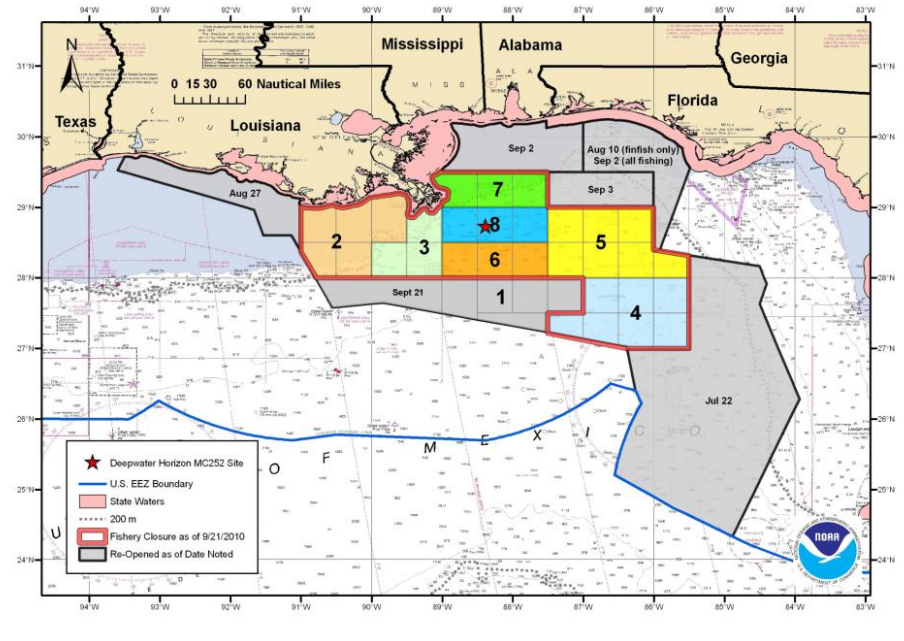
Next Forecast: May 9th PM



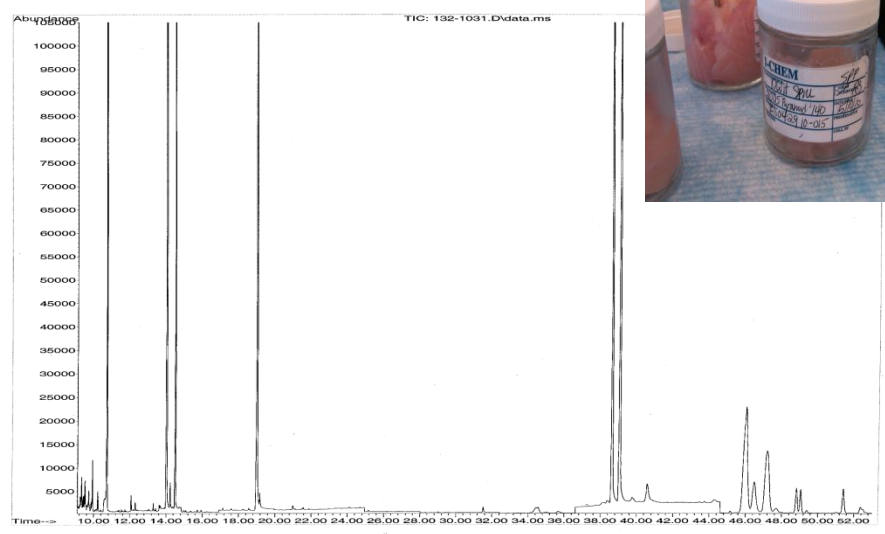
Oil Trajectory Forecasts



Tentative Sequence of Remaining Sampling
Within the Federal Closed Area as of 09/27/2010



File :D:\MSDCHEM\1\DATA\DeepwaterDATA\DH2115AH\132-1031.D
 Operator : RP
 Acquired : 7 Oct 2010 9:06 pm using AcqMethod ALKSIM.M
 Instrument : 5975-1
 Sample Name : 132-1031
 Misc Info :
 Vial Number: 30



Seafood Safety



Protecting Wildlife & Habitats



Assessing Damage



Restoring Natural Resources





CAGE
THR: 0
DPT: 4840'
HDG: 089
TRN: 0.5

Maxx 3



ROV
DPT: 4935'
ALT: 71
BTY: 5006'



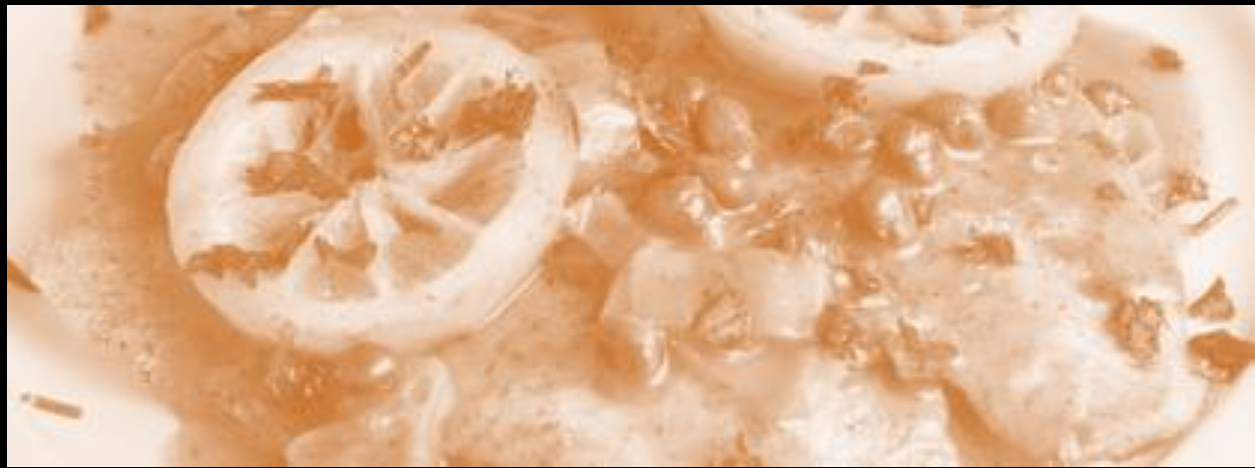
MBARI

OCEANEERING

37

06/03/10
14:30:35

eat



swim



fish

